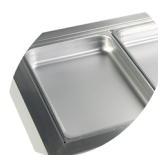


## CW3

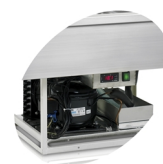
### Cooling Well GN1/1

#### Product features

- Stainless steel
- Static cooling
- Electronic thermostat
- Accepts GN1/1 pans (Not supplied)



Designed for GN1/1 pans, not supplied



Automatic evaporation of defrost water

Design and Material		
Number of dividers	pcs	4
Exterior Finish		SS304
Interior Finish		SS304

Measures and Content		
Capacity GN Pans	pcs	3
Temperature Range	°C	+2 to +8
Climate Class		4
Gross / Net Weight	kg	55 / 50
Gross / Net Volume	l	104 / 102

Cooling and Functions		
Type of Controller		Electronic
Type of Cooling		Static
Type of Defrost		Automatic
Refrigerant		R600a
Refrigerant Charge	g	70
Thermometer		Yes
GWP		3

Power and Consumption		
Energy Consumption	kWh/24h	288
Energy Consumption	kWh/h	0,12
Annual Energy Consumption	kWh/year	1051
Input Power	W	122
Voltage / Frequency	V/Hz	220-240/50
Noise Level	db(A)	42

Dimensions		
Build In Dimension (WxD)	mm	1075 x 650
Internal Dimension (WxDxH)	mm	994 x 570 x 175
External Dimension (WxDxH)	mm	1102 x 678 x 536
Packed Dimension (WxDxH)	m	1150 x 730 x 680
40ft Container Load	pcs	96